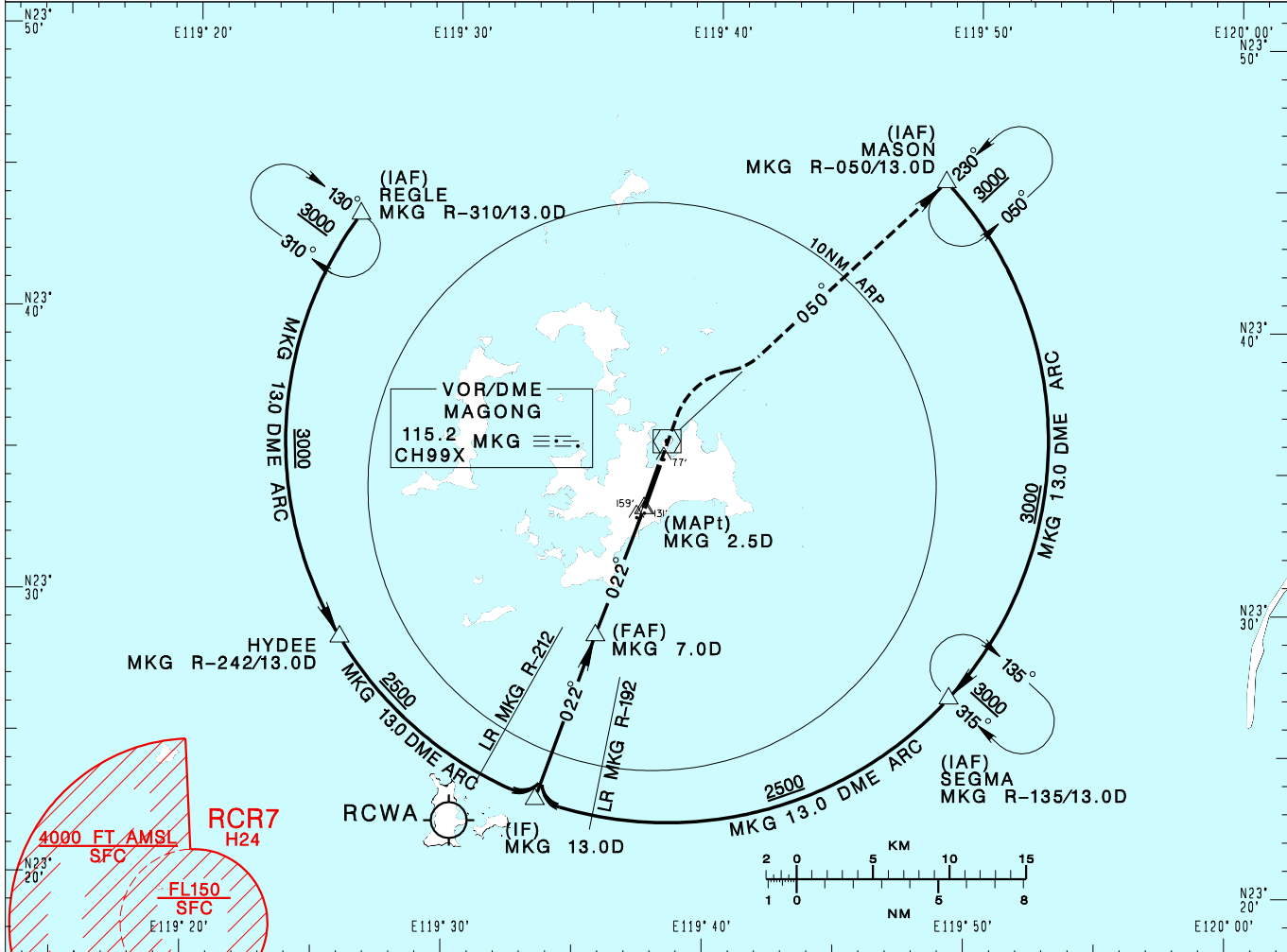


**澎湖機場**  
PENGHU AD

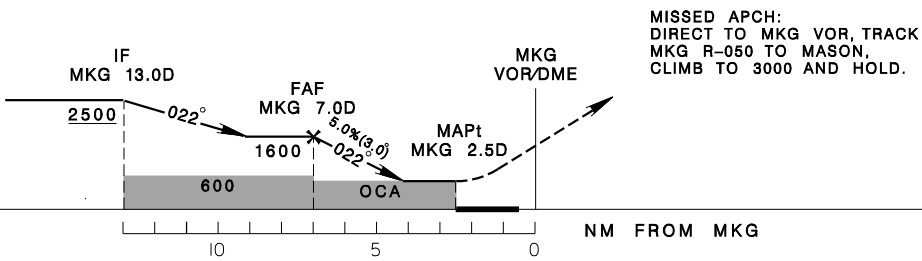
RCQC  
VOR RWY02

KAOSIUNG APP 128.1 234.8	MAGONG TWR 118.3 236.6	ATIS 127.05	<p>2000'</p> <p>MSA ARP 25NM</p>		
Apt Elev: 103'		Rwy02 THR Elev: 103'		Trans Level: FL130	Trans Alt: 11,000'
BEARINGS ARE MAGNETIC; DISTANCES ARE NAUTICAL MILES; ELEVATIONS, HEIGHTS IN FEET					



7.0 DME	6.0 DME	5.0 DME	4.0 DME	DIST to MKG
1600	1280	960	640	ADVISORY ALT

CHANGES: MAPt POSITION, MAG VAR, LEG INFORMATION



MISSED APCH:  
DIRECT TO MKG VOR, TRACK  
MKG R-050 TO MASON,  
CLIMB TO 3000 AND HOLD.

MINIMA (OCA IN FT, VIS IN M, OCH IN FT)					NOTE CIVIL AIRCRAFT USE EAST TRAFFIC PATTERN. * DME REQUIRED
CATEGORY	A	B	C	D	
STRAIGHT IN	540/1200 437	540/1600 437	540/1600 437	540/1600 437	
STRAIGHT IN (ALS OUT)	540/1600 437	540/1600 437	540/2000 437	540/2000 437	
CIRCLING	620/1900 517	620/2800 517	710/3700 607	800/4600 697	